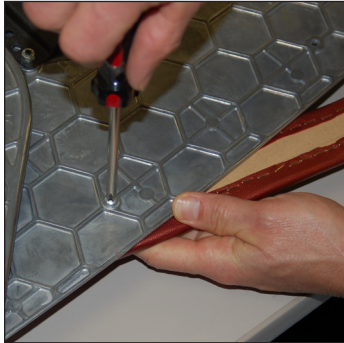


Tools: Phillips screwdriver
3/8" Socket wrench

People Required: 1 Person

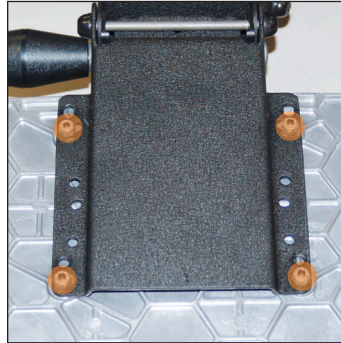
Time: 5 Minutes

Palm rest Installation/ Replacement



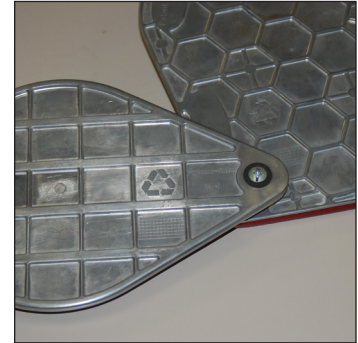
1. Attach palm rest to, or remove it from, the aluminum tray with the 2 Phillips-head screws that secure it from the underside of the tray.

Installing Tray to Arm



1. Position the tray over mechanism/arm so the pre-installed bolts in the tray line up with the holes in the arm mounting plate. Install and tighten a lock washer with a 3/8" nut on each of the threaded bolts to secure it to the mounting plate.

Removing Mouse Platform



1. To remove the mouse platform from the tray, simply remove the large Phillips-head screw that secures it. Note: Contact your Neutral Posture before attempting to re-installing the mouse platform.